



LUXE ATELIER

MILANO

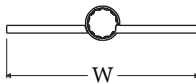
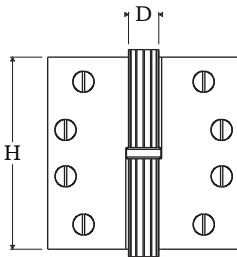
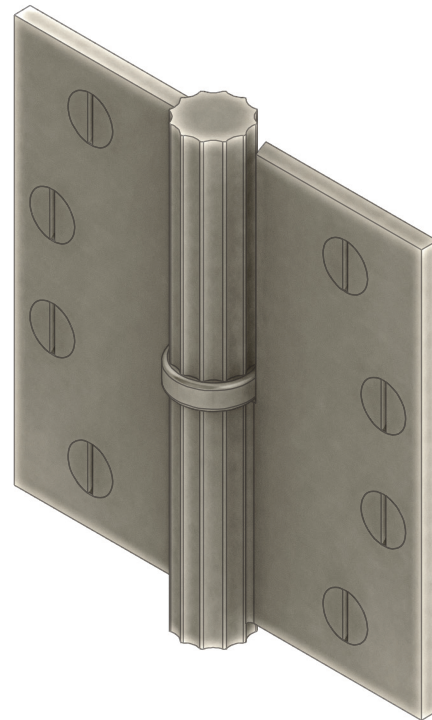


Cerniera a Libro Serie Fluted 02 (RH/LH)  
*Fluted Series 02 Paumelle Hinge (RH/LH)*

Dimensioni  
*Dimensions*

	H	W	D
XS	3.0	3.0	0.625
S	3.5	3.5	0.625
M	4.0	4.0	0.625
L	4.5	4.5	0.625
XL	5.0	5.0	0.625

Dimensioni in pollici  
*Dimensions given in inches*



Perno in acciaio e viti legno in finitura coordinata.  
Disponibile in tutte le finiture standard.  
Dimensioni e finiture su misura disponibili su richiesta.

*Stainless steel pin and wood screws in matching finish.  
Additional sizes available by special order. Available in standard and custom finishes.*